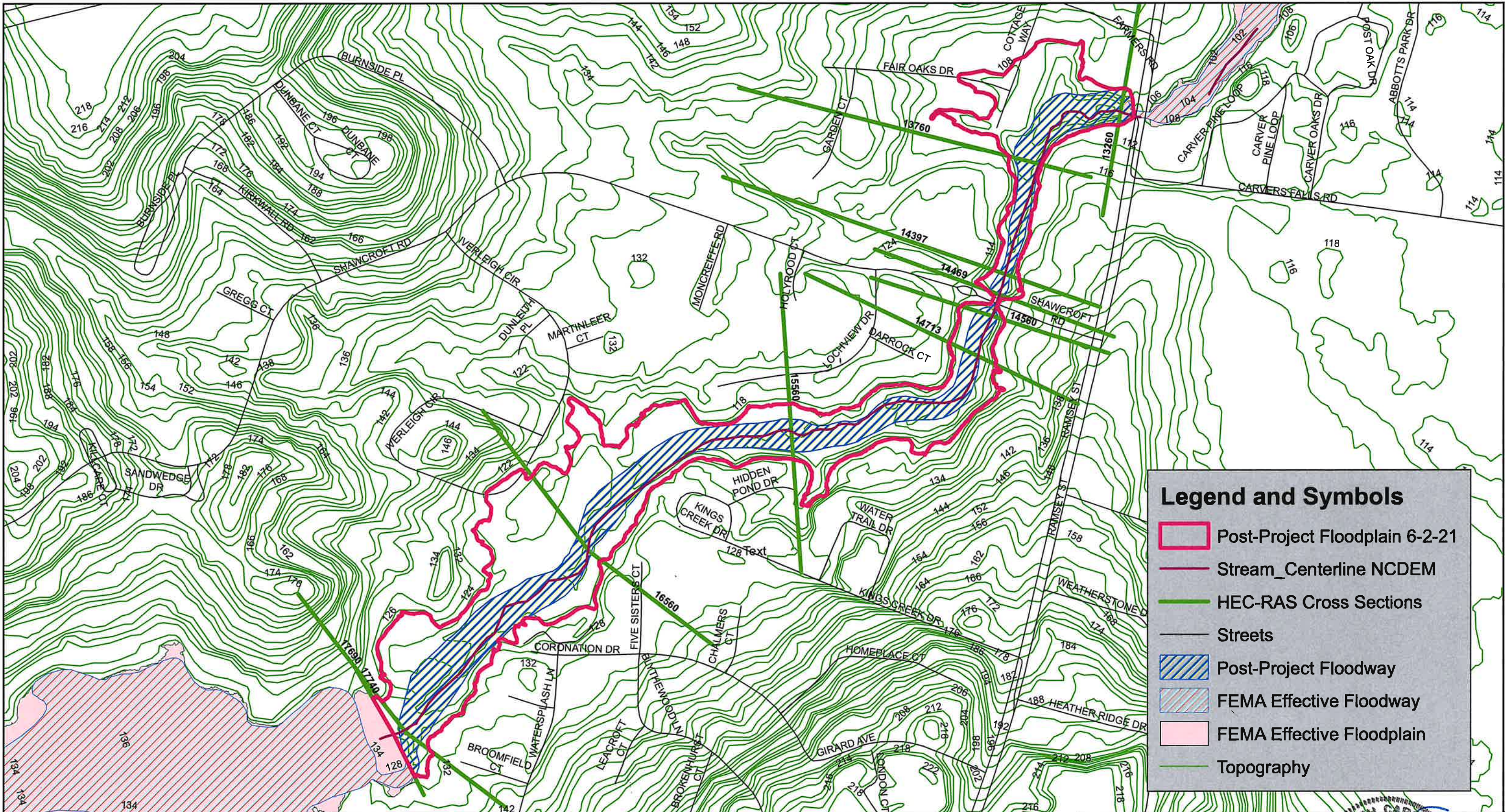


<div>Shawcroft - Pre-Project Conditions</div> <div>Verticle Datum - NAVD88</div>		CLIENT:	City of Fayetteville, North Carolina			Prepared By:	<div>Hazen</div> <div></div>
		PROJECT:	Shawcroft Road Culvert				
		LOCATION:	Fayetteville, NC				
<div></div> <div><div>02054108201,2301,640</div><div>Feet</div><div>1 in = 400 feet</div></div>	MAP #						
	DATA:						
	DATE:	July 2020	Prepared By: MW	Reviewed By: HS			



Legend and Symbols

Post-Project Floodplain 6-2-21

Stream_Centerline NCDEM

HEC-RAS Cross Sections

Streets

Post-Project Floodway

FEMA Effective Floodway

FEMA Effective Floodplain

Topography

Shawcroft - Post-Project Conditions
Verticle Datum - NAVD88

02004008001,2001,600

Feet

1 in = 388.82 feet

CLIENT:City of Fayetteville, North Carolina

PROJECT:Shawcroft Road Culvert

LOCATION:Fayetteville, NC

MAP #

DATA:

DATE:July 2020

Prepared By: MW

Reviewed By: HS

Prepared By:

Hazen

PROFESSIONAL SEAL
STEPHEN R. SANDS
ENGINEER
16229

H&S Proj. # 31257-012